

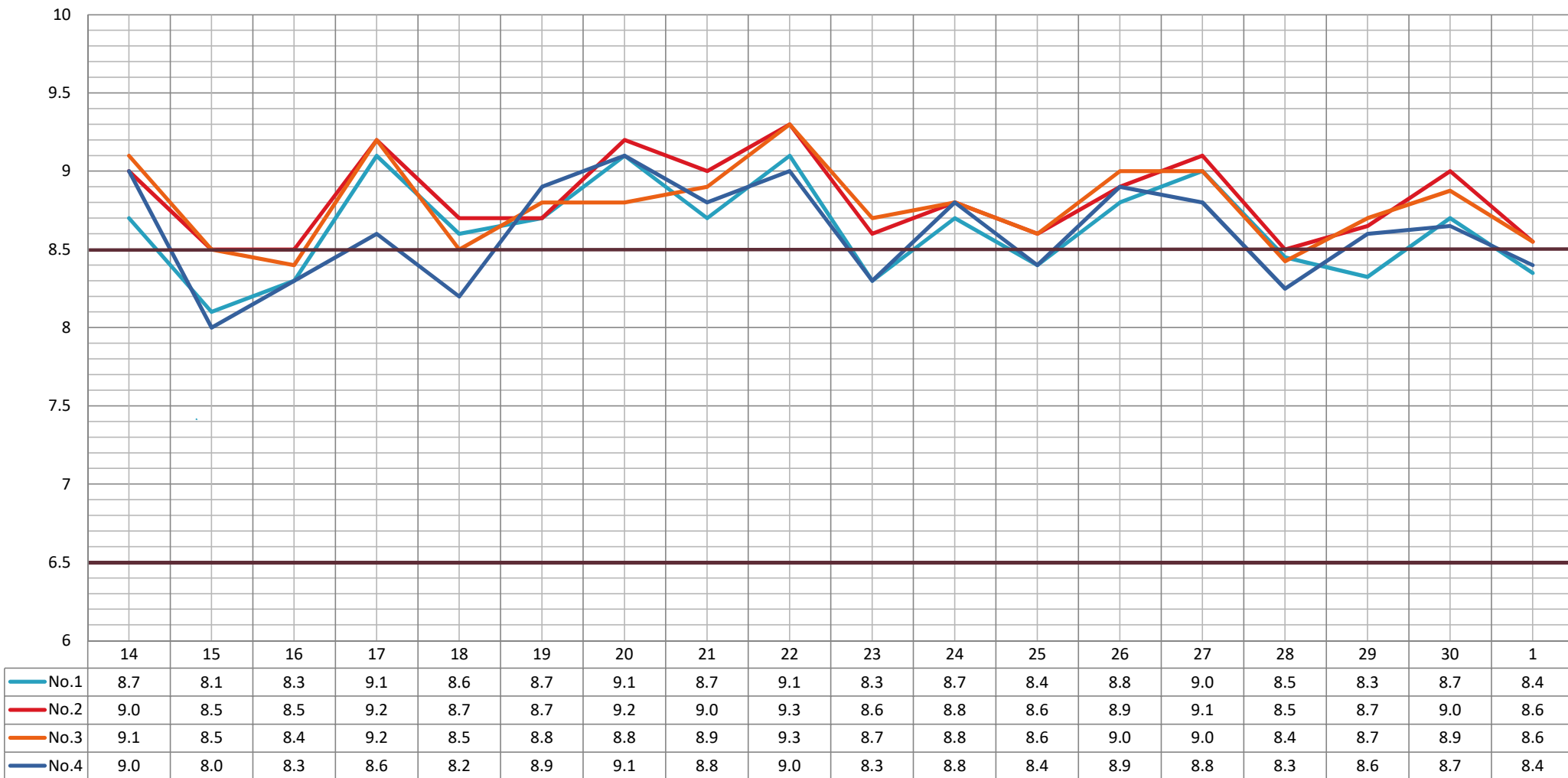
過去のデータ(採取地点毎・年間平均)

pH					COD					SS					大腸菌群数				
年度	No.1	No.2	No.3	No.4	年度	No.1	No.2	No.3	No.4	年度	No.1	No.2	No.3	No.4	年度	No.1	No.2	No.3	No.4
13	8.2	8.4	8.9	8.9	13	4.4	5.3	4.9	4.6	13	17.0	13.0	10.0	10.0	13	247	169	285	49
14	8.7	9.0	9.1	9.0	14	5.7	7.7	7.9	8.6	14	20.0	14.0	14.0	17.0	14	12	4	4	11
15	8.1	8.5	8.5	8.0	15	5.6	5.9	6.7	4.2	15	13.0	7.7	6.9	6.2	15	167	246	852	122
16	8.3	8.5	8.4	8.3	16	5.8	6.0	5.9	6.0	16	11.0	10.0	12.0	13.0	16	4300	8615	1651	5600
17	9.1	9.2	9.2	8.6	17	11.0	11.0	6.6	8.3	17	19.0	21.0	9.0	16.0	17	400	470	6500	27000
18	8.6	8.7	8.5	8.2	18	8.0	8.5	7.7	6.7	18	19.0	17.0	18.0	11.0	18	1720	1190	2490	18700
19	8.7	8.7	8.8	8.9	19	6.8	7.6	7.0	6.1	19	16.0	14.0	13.0	14.0	19	412	770	1265	4115
20	9.1	9.2	8.8	9.1	20	5.2	7.8	4.6	7.8	20	3.0	6.3	2.2	8.3	20	33	33	350	170
21	8.7	9.0	8.9	8.8	21	7.6	7.2	7.2	7.3	21	11.0	10.0	9.0	9.0	21	1447	1385	2379	7670
22	9.1	9.3	9.3	9.0	22	9.4	10.1	9.9	9.9	22	20.5	17.0	17.0	14.7	22	392	118	142	1956
23	8.3	8.6	8.7	8.3	23	6.9	7.2	7.9	7.5	23	23.0	21.0	15.0	16.0	23	3463	2924	6188	23958
24	8.7	8.8	8.8	8.8	24	7.8	7.8	8.1	8.5	24	21.0	13.5	13.1	14.4	24	283	385	377	944
25	8.4	8.6	8.6	8.4	25	6.0	6.1	6.1	6.4	25	9.0	9.1	7.7	10.3	25	16	64	280	533
26	8.8	8.9	9.0	8.9	26	7.7	7.9	7.9	7.8	26	21.5	13.8	11.6	12.1	26	201	51	100	523
27	9.0	9.1	9.0	8.8	27	7.2	7.6	8.0	9.2	27	15.3	13.0	14.0	17.0	27	6084	2851	1237	2240
28	8.5	8.5	8.4	8.3	28	7.7	7.9	7.9	7.6	28	13.1	11.2	11.0	10.6	28	1310	7258	3814	14310
29	8.3	8.7	8.7	8.6	29	5.7	6.1	7.1	7.1	29	12.1	11.5	15.3	14.7	29	79	142	319	1036
30	8.7	9.0	8.9	8.7	30	6.8	7.6	7.7	7.0	30	14.4	10.9	11.0	12.2	30	137	129	217	473
1	8.4	8.6	8.6	8.4	1	6.5	7.2	6.9	6.0	1	11.2	10.3	10.5	10.8	1	155	2330	626	643

平均値(今年度)

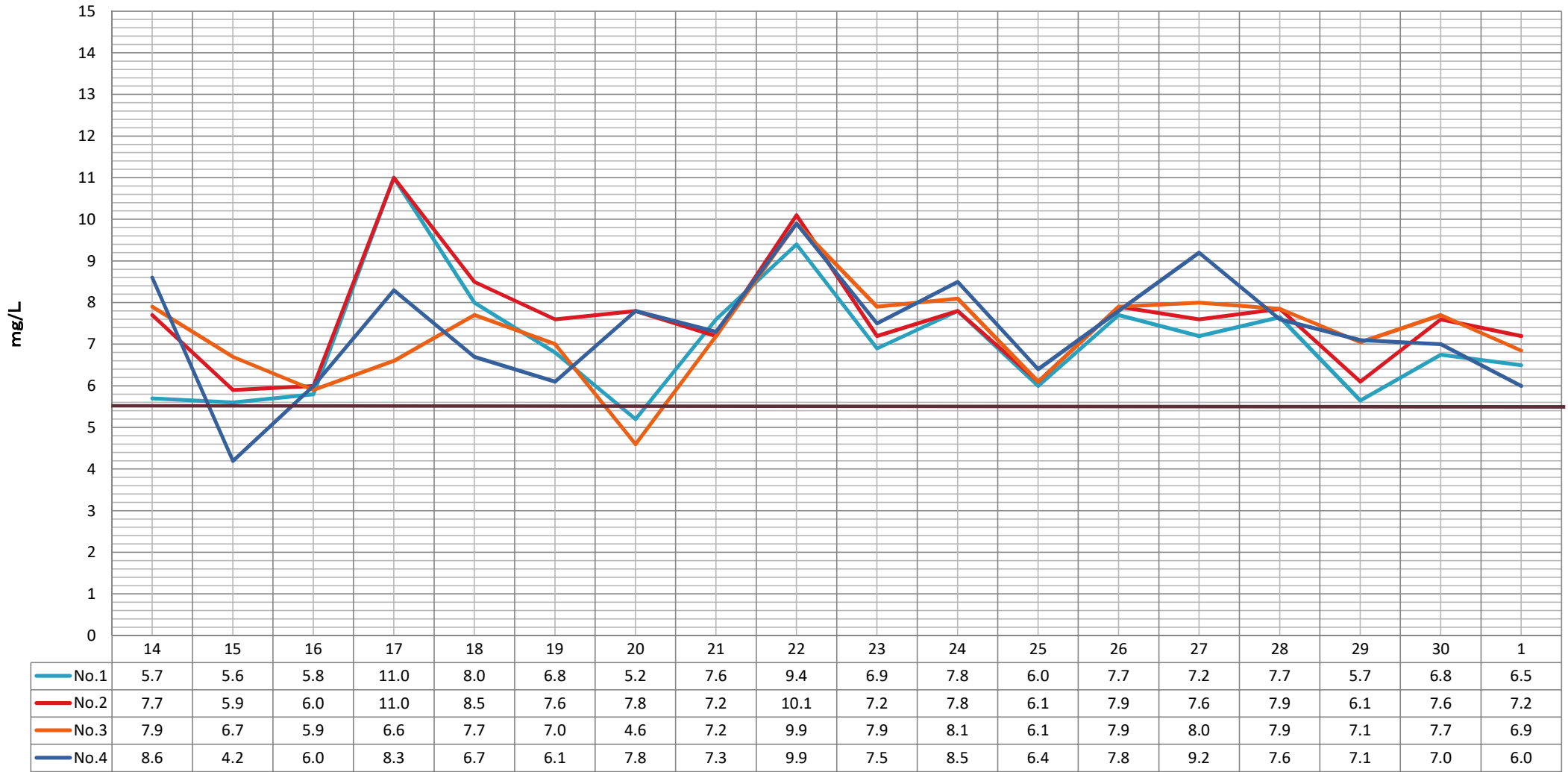
総窒素					総りん					溶存酸素										
年度	No.1	No.2	No.3	No.4	年度	No.1	No.2	No.3	No.4	年度	No.1	No.2	No.3	No.4		No.1	No.2	No.3	No.4	全部
13	2.0	2.0	2.0	2.4	13	0.12	0.15	0.13	0.14	13	9.1	9.3	9.4	12.5	pH	8.4	8.6	8.6	8.4	8.5
14	1.9	1.9	2.3	2.3	14	0.21	0.21	0.22	0.25	14	11.7	13.1	13.5	13.1	COD	6.5	7.2	6.9	6.0	6.6
15	1.8	2.1	1.9	2.1	15	0.07	0.06	0.07	0.06	15	11.4	12.5	12.3	11.1	SS	11.2	10.3	10.5	10.8	10.7
16	1.7	1.7	1.9	2.1	16	0.11	0.10	0.11	0.12	16	9.9	10.8	8.9	9.5	c-g	155	2330	626	643	939
17	1.7	1.8	1.9	2.2	17	0.10	0.11	0.11	0.12	17	12.7	13.0	13.4	11.5	T-N	1.6	1.6	1.6	1.7	1.6
18	1.8	1.7	1.7	1.6	18	0.26	0.22	0.21	0.15	18	11.8	11.4	11.0	10.6	T-P	0.2	0.1	0.1	0.1	0.1
19	1.6	1.7	1.8	1.8	19	0.07	0.08	0.08	0.09	19	10.7	11.6	10.8	10.1	DO	9.9	10.8	10.8	10.7	10.6
20	2.1	2.4	2.2	2.5	20	<0.01	0.08	0.03	0.02	20	14.5	16.4	14.5	16.8	CI	3352	3217	2915	2631	3029
21	2.1	1.8	1.9	2.1	21	0.10	0.07	0.07	0.07	21	10.9	10.6	11.4	10.7						
22	1.9	2.0	2.1	2.3	22	0.05	0.05	0.06	0.10	22	12.8	13.3	13.8	13.9						
23	2.0	2.0	2.0	2.3	23	0.10	0.08	0.08	0.08	23	9.9	10.1	10.4	10.1						
24	1.5	1.4	1.5	1.6	24	0.03	0.04	0.03	0.03	24	10.6	11.3	11.6	12.2						
25	1.2	1.2	1.2	1.6	25	0.02	0.02	0.01	0.03	25	10.2	10.9	10.6	10.7						
26	1.7	1.6	1.5	1.7	26	0.07	0.05	0.01	0.08	26	11.4	12.2	12.3	13.5						
27	1.4	1.3	1.4	1.7	27	0.05	0.09	0.08	0.13	27	9.2	9.5	10.9	10.3						
28	1.4	1.6	1.5	1.7	28	0.09	0.08	0.08	0.08	28	11.3	11.0	11.3	10.2						
29	1.5	1.7	1.6	1.9	29	0.07	0.06	0.06	0.07	29	10.1	11.1	10.6	11.6						
30	1.4	1.3	1.4	1.4	30	0.05	0.06	0.09	0.10	30	10.4	11.4	10.7	10.5						
1	1.6	1.6	1.6	1.7	1	0.21	0.07	0.08	0.13	1	9.9	10.8	10.8	10.7						

pH



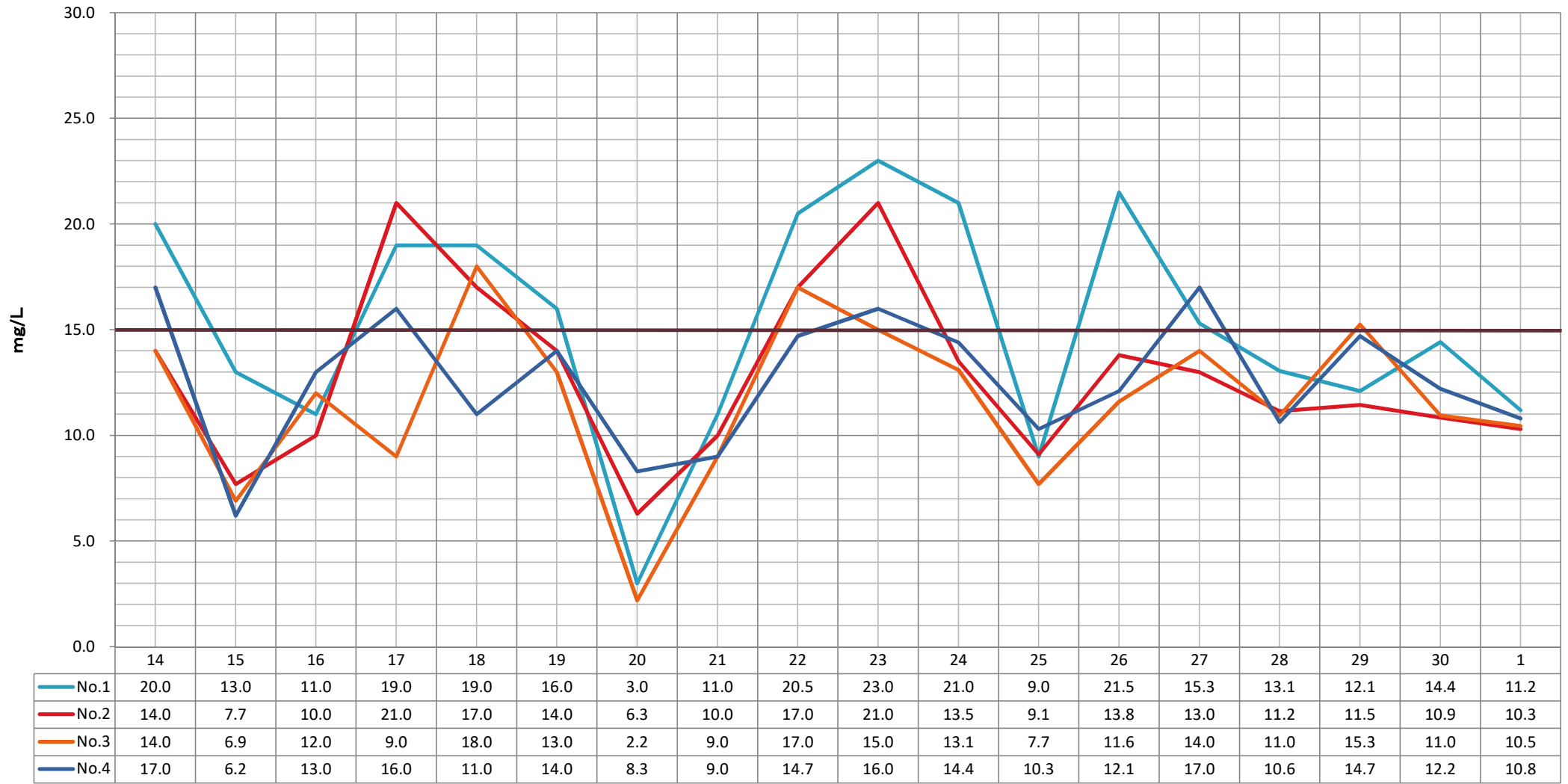
— No.1
 — No.2
 — No.3
 — No.4

COD



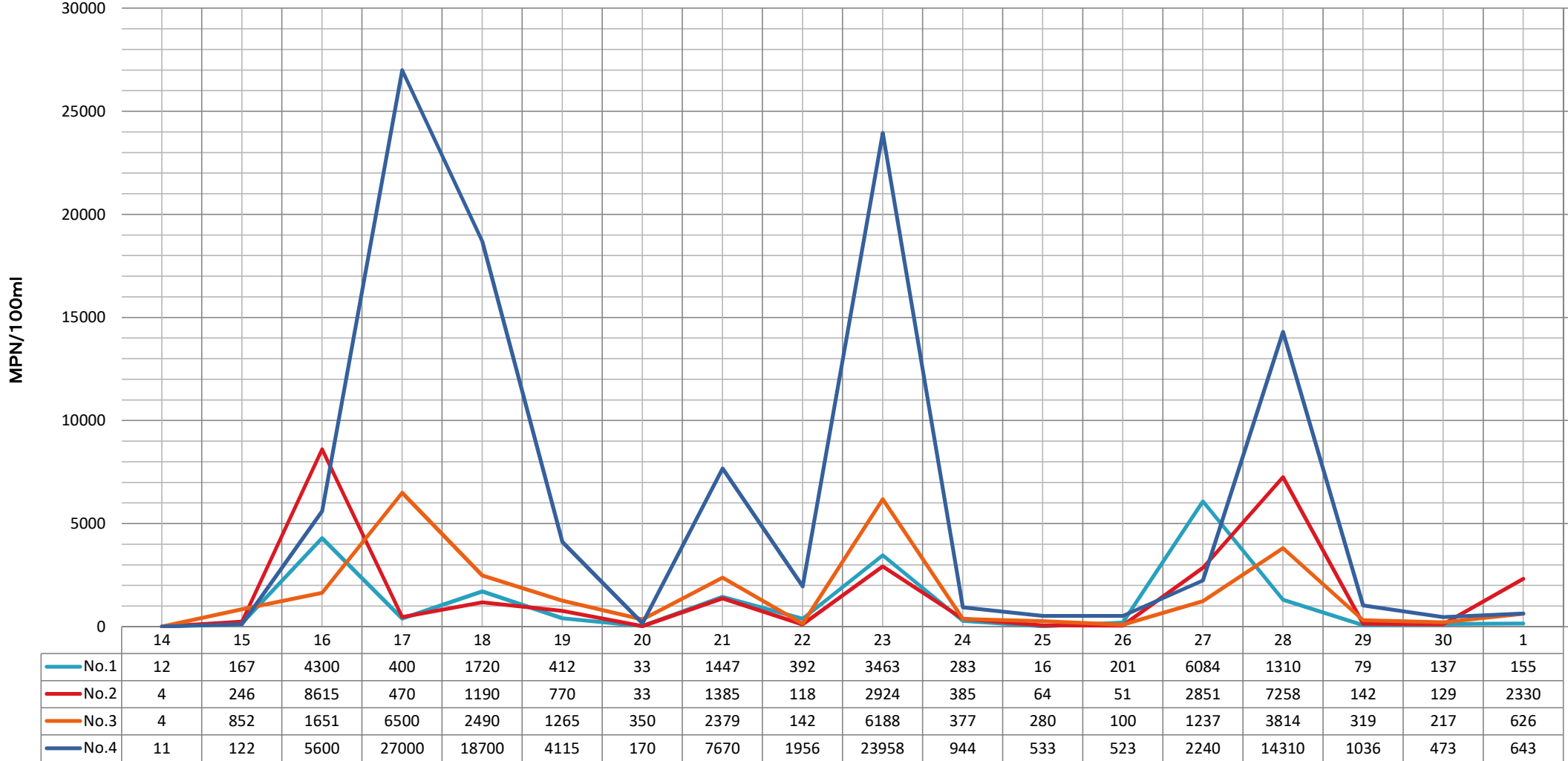
— No.1
 — No.2
 — No.3
 — No.4

SS



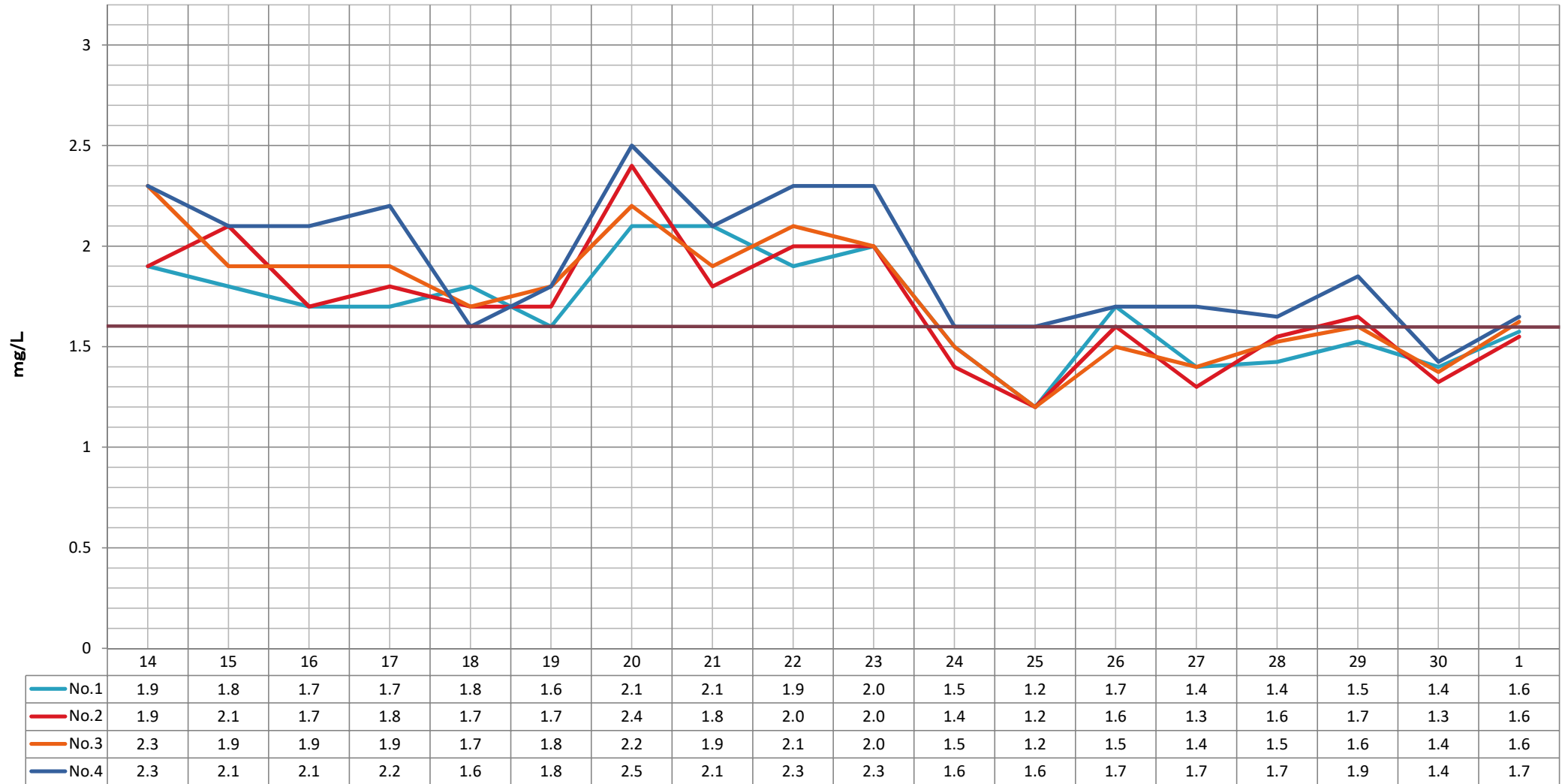
— No.1 — No.2 — No.3 — No.4

大腸菌群数



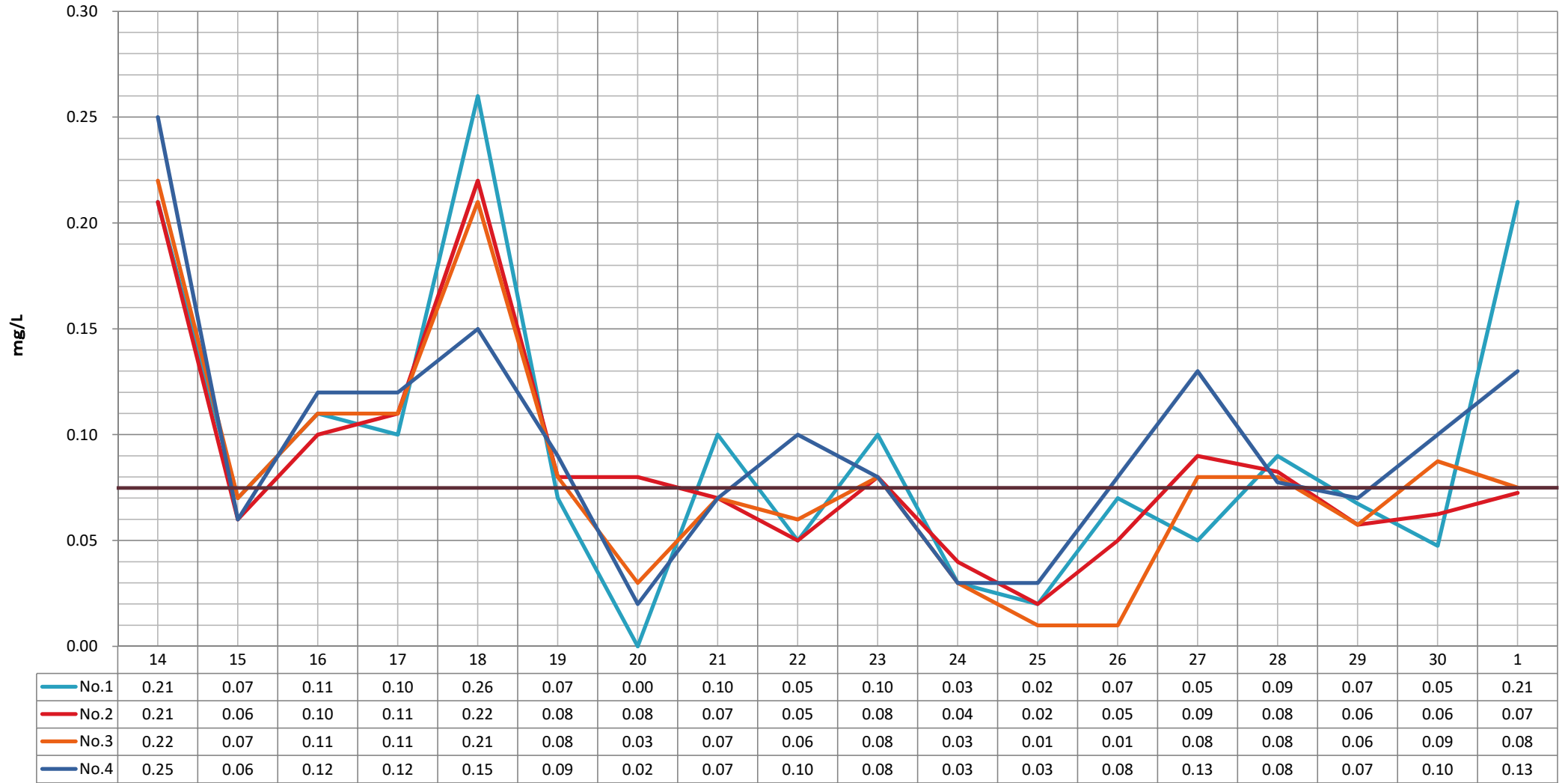
No.1 No.2 No.3 No.4

総窒素



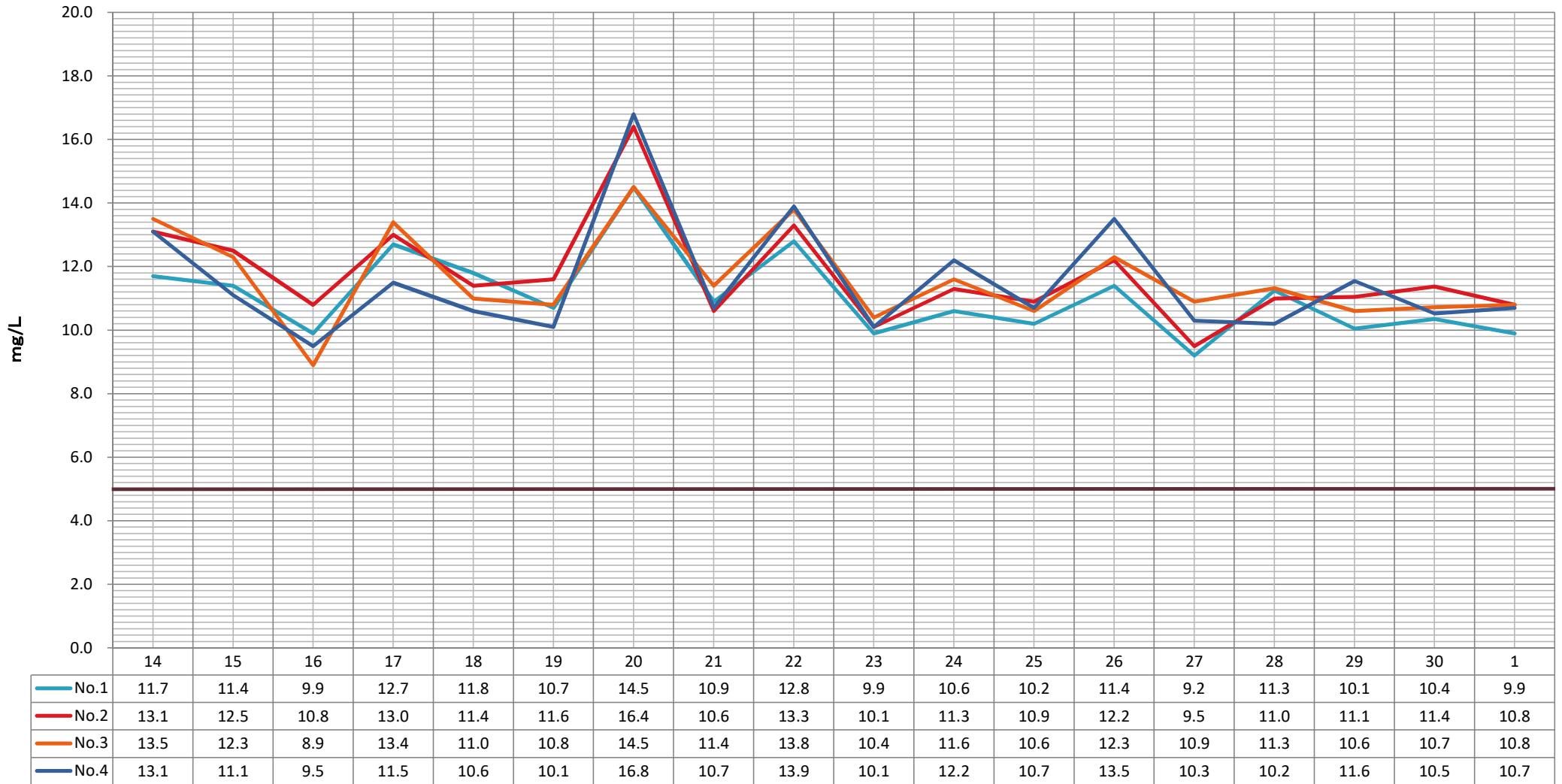
— No.1 — No.2 — No.3 — No.4

総りん



— No.1 — No.2 — No.3 — No.4

溶存酸素



— No.1 — No.2 — No.3 — No.4